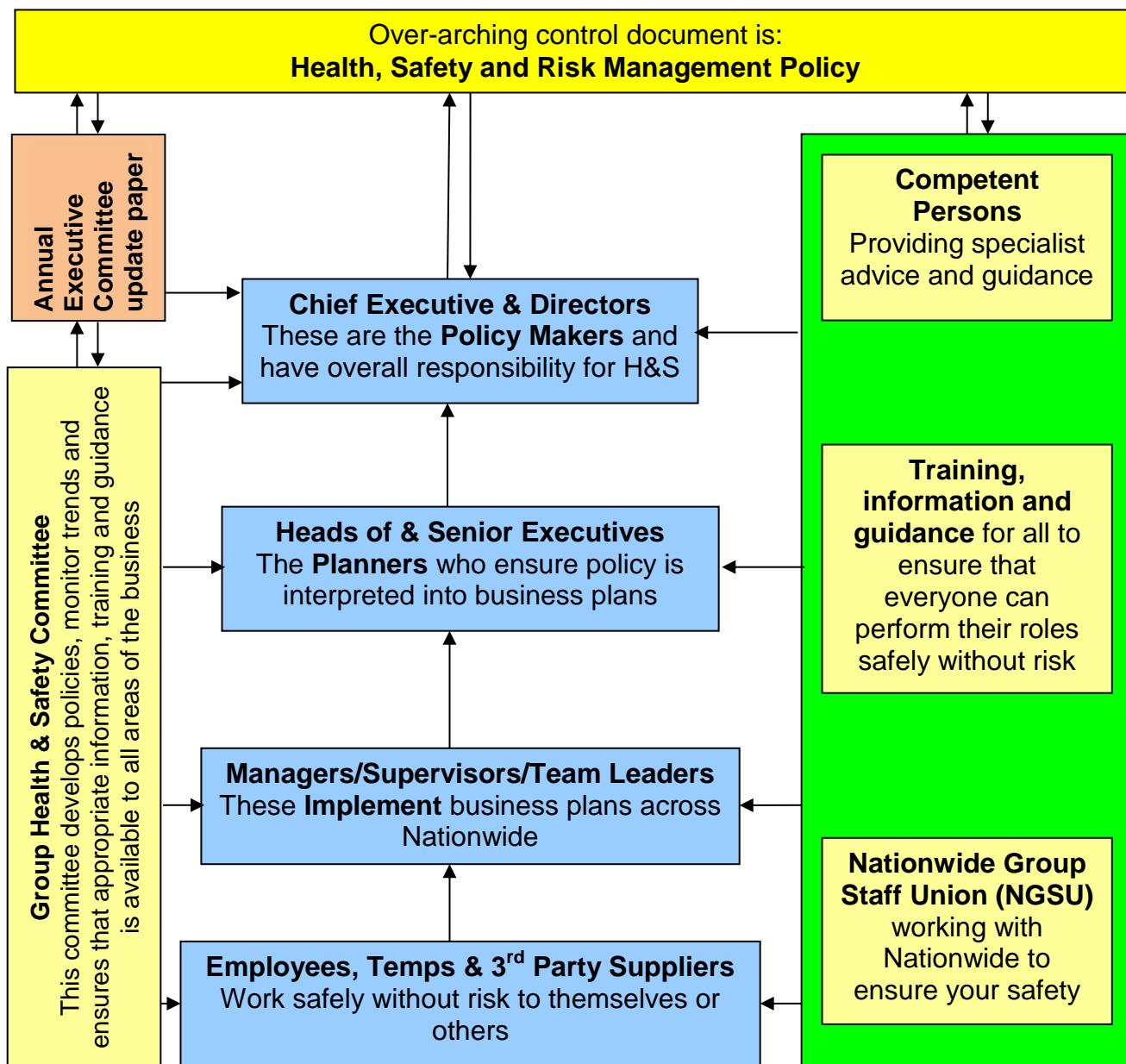


Health & Safety (H&S): Structure and Organisation

This diagram has been produced to give an overview of how health and safety is managed within Nationwide, the hierarchy of responsibility and where support, guidance and information is available.



Document Control

CHANGES SINCE LAST VERSION

- Annual Exco paper added and typing mistake corrected

VERSION HISTORY

Version	Date	Comment
3.0	31.07.2014	Annual Exco paper added, typo corrected
2.0	21.08.2012	Strategic and Procedural meetings merged into one
1.0	28.03.2012	New simplified format approved

SUPERSEDED DOCUMENTS

Responsibilities dated 28th November 2011

ISSUE CONTROL

Owner: Chief Safety Officer
Approver: Group Health and Safety Committee (Policy and Governance Group)